



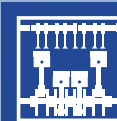
CLEAN AND CARE SYSTEMS

Cleaning, maintenance and care products for vehicles and industry

www.bluechem.de

Carbon X

Professional combustion chamber cleaning, in particular the cylinder head area



Carbon X Extractor

Pneumatic pump

The Carbon X Extractor is designed for extracting all types of engine, transmission and lubricating oils from various vehicles.

Also for siphoning all kinds of non corrosive liquids.

- Automatically stop function
- Easy to operate and carry
- Provides a simple way to evacuate fluids
- Lightweight and time-saving
- 5 L container for liquid absorption incl. 3 suction probes (Ø 9,8 mm, Ø 6,7 mm, Ø 5,8 mm)

Device	Carbon X Extractor
PU	1 pc.
Art.-No.	34142



Endoscope camera

With 6 LED for Android or PC

Resolution: 640x480, 1280x720 (PC)
 Focal length: 40mm – infinite
 Diameter: 5,5mm
 Cable length: 2 m (camera), 10 cm (adapter)
 Operating system: Windows 2000 / XP / Vista / 7 / 10

Scope of delivery
 Mini-endoscope camera, micro-USB cable, small hook, magnet, mirror (90° angle), protective cap, software CD, adapter USB to micro-USB, instructions

„BASIC“

Device	Endoscope camera
PU	1 pc.
Art.-No.	34141

Scan the qr code for more information:



04-2017 / EN
 Art.-Nr.: 10082-1

WHY CARBON X?

... because deposits, especially at the valve seat, can become very expensive.

This leads to loss of pressure and performance, irregular engine running, increased fuel consumption, poor exhaust gas values, incorrect combustion and increased wear.

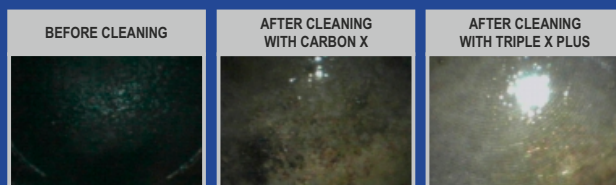
The all-round carefree package

All the positive effects of Carbon X were tested internally on different vehicles. It was found that the application of the product significantly improved the compression and also the exhaust gas values.

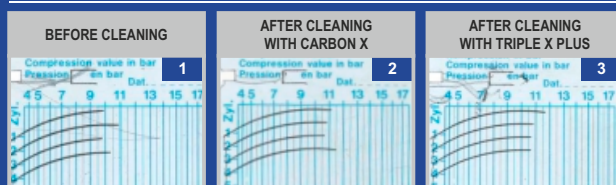
A subsequent intake system cleaning with Triple X PLUS (33648) and an oil change with internal engine cleaning (33018) even led to a further optimization of the measured values.

For permanent protection against carbonization, we recommend the regular use of the fuel system (33028) and internal engine cleaner.

1. PISTON CROWN



2. COMPRESSION TEST



Repair shop test "Opel Astra", mileage 160,000 km, 07/11/2016- Proof of effectiveness in workshop-related application. Before cleaning: 3 of 4 cylinders have an approx. 10% higher pressure. After cleaning: All cylinders have an approximately equal value after application.



CTP GmbH
 Saalfelder Str. 35h
 07338 Leutenberg / GERMANY
 Phone: +49 (0)36734 230-0
 Fax: +49 (0)36734 230-22
 www.bluechem.de

bluechem GROUP

www.bluechemgroup.com

bluechem - chemical technical products

CAUSE

Smaller engines, bigger problems: The consequences of downsizing

Already in 2014, the share of engines with an engine displacement volume of 1.0 - 1.9 liters was 49% worldwide – and the trend is rising! Automotive manufacturers use this technology, which is known as downsizing, to reduce the fuel consumption of their models and thus meet the stricter exhaust gas norms (EURO 6). At the same time, however, performance should not decrease. As a result, a very lean gasoline-air mixture (much air) is used during the vehicle operation. The result is very high temperatures in the cylinders, which cause an uncontrolled and incomplete combustion, which in turn leads to carbonization.

PROBLEM

The problem of operational deposits is not only that they obstruct the normal operation of the engine and lead to the already mentioned negative effects on performance, consumption and emissions, but also that they become partly as hard as granite. This makes their thorough removal very difficult.

SOLUTION

The bluechemGROUP has developed a completely new chemical formulation for combustion chamber cleaning in its in-house laboratory. With Carbon X, we present a system that specifically and precisely removes even stubborn deposits in the cylinder head area, in particular at the inlet and outlet valves, the piston crown and piston top lands, thus ensuring quiet engine running, low emissions, powerful performance and economical fuel consumption.

Carbon X

2-component system
for professional combustion chamber cleaning



- Removes operationally caused deposits in the entire combustion chamber and cylinder head area, in particular on valves (also the seats of inlet and outlet valves), first piston ring, piston crown and piston top land
- Long and targeted reaction time without dismantling of the cylinder head, cylinder and valves
- Deeply effective cleaning, reaches even difficult to access areas
- Compatible with all engine components, does not attack surfaces and seals, non-corrosive
- Application takes place in the idle state of the engine
- Cleaning emulsion with high lubrication effect

RESULTS of a combustion chamber cleaning

- ✓ Restores the tightness and filling volume of the combustion chamber
- ✓ Increases compression
- ✓ Reduces wear
- ✓ Optimizes fuel consumption
- ✓ Ensures quiet engine operation and optimal combustion
- ✓ Improves engine performance and exhaust emissions
- ✓ Prevents engine problems

Application area

Cleaning of the entire combustion chamber of petrol and diesel engines *TIP:* In addition to the combustion chamber cleaning, the EGR valve, turbocharger and air intake system (all parts in dismantled state) can also be cleaned.

Application

K1: Insert the probe through a suitable access port (remove spark plug and insert via spark plug opening). Spray K1 with the probe inserted into the combustion chamber. The product increases its volume and expands. As soon as the foam comes out of the access port, stop spraying and let react for about 15-20 minutes.

K2: Add K2 immediately after application of K1. Insert the probe into the previously used access port. Spray K2 generously and let it react for about 4-5 minutes. Extract the resulting emulsion with Carbon X-Extractor (Art.-No.:34142) .

Repeat the procedure if necessary. An optionally available endoscope camera (Art.-No.: 34141) can be used for checking.

Mode of operation

Works during the cleaning process, Reaction time: 15-20 min

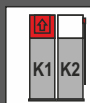
Cleaning	★	★	★	★	★
Lubrication	★	★	★	★	★
Protection	★	★	★	★	

Scope of delivery

Carbon X (2-componenten system)

Content K1+K2
(2x 500ml)

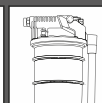
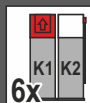
PU: 1 Set (each 6 pcs.) Art.-No. 34140



Carbon X Starter Set

Content 1 PU (each 6 pcs.)
+ Carbon X Extractor

PU: 1 Set Art.-No. 34143



Carbon X Starter Set PLUS

Content 1 PU (each 6 pcs.)
+ Carbon X Extractor
+ Endoscope Camera

PU: 1 Set Art.-No. 34144

